

GLASSCOAT

Guaranteed to outlast & outperform other materials

APPEARANCE

A beautiful, sparkling look. The **GLASSCOAT** surface permanently remedies a dull, lackluster appearance, and instantly improves the pool's appeal.

DURABILITY

A long lasting solution to surface problems. **GLASSCOAT** eliminates other materials' need for acid washing, painting and replastering. **GLASSCOAT** is not subject to degradation like conventional materials, including vinyl liners.

VERSATILITY

GLASSCOAT can be applied to steel, aluminum, painted surfaces, and concrete. It can also be used on vessels not suitable for traditional materials.

ADHESION

GLASSCOAT has a very strong bond to concrete. It will not disbond. "Pop-offs" associated with replastering are avoided.

APPLICATION

Spray-application by experienced applicators. Pools experience very little downtime, allowing rapid return-to-service.

COST EFFECTIVE

Low life-cycle cost means **GLASSCOAT** does not require periodic maintenance.

SERVICE LIFE

A very long service life has been observed.

WARRANTY

A meaningful application and performance warranty is provided.

START-UP

On completion of application, start-up is far less expensive, **less** complicated and **less** time consuming.

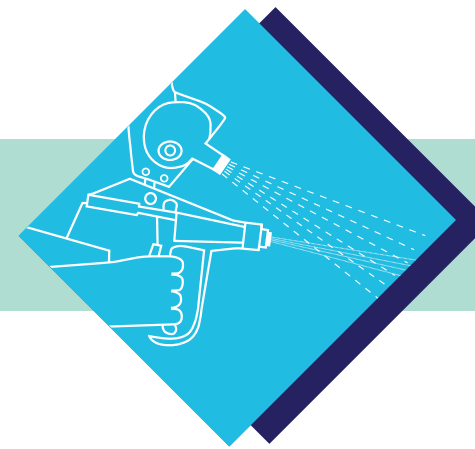
TO SPECIFY GLASSCOAT FOR POOL
RENOVATION PROJECTS VISIT:
www.fiberglasspoolsurface.com

TECHNICAL AFFILIATIONS:

Peter Gibson - Our Expert Specifying / Corrosion Engineer
International Concrete Repair Institute
The American Composites Manufacturers Association
The Society for Protective Coatings
NACE — The Corrosion Society



**CERTIFIED
POOL
RESURFACING**
+1 (470) 524-0900



CERTIFIED POOL RESURFACING

Specialized Spray-Applied **GLASSCOAT** For Pools And Spas

Glasscoat Solutions for Premium Pool Restoration
Applied by Certified Applicators

GLASSCOAT RESURFACING

THE SUPERIOR MATERIAL TO RESTORE YOUR POOL'S SURFACE

ELIMINATE

- ✓ Cracks and Leaks
- ✓ Algae and Staining
- ✓ Rough Surfaces
- ✓ Discoloration
- ✓ High Chemical Usage
- ✓ Rebar Stains
- ✓ Plaster Problems

A proven track record in severe industrial corrosion environments.

NOW! A one-time solution for pool surface problems!

**COMMERCIAL & RESIDENTIAL
POOLS INDUSTRIAL
APPLICATION SPECIALISTS**

The material most often specified by Aquatic Consultants for commercial pool resurfacing and aquatic facility restoration.

Specifications Document Available

CERTIFIED POOL RESURFACING

service@fiberglasspoolsurface.com | 470.524.0900 | www.fiberglasspoolsurface.com

Glasscoat Pool Resurfacing
The low-maintenance pool

COMPARATIVE ANALYSIS OF PLASTER & GLASSCOAT

POOL CONDITIONS	PLASTER	GLASSCOAT
ROUGH SURFACES	As plaster wears, roughness increases. Quartz and pebble plaster becomes rough with age.	Always smooth. No scratched feet.
STRUCTURAL CRACKS	Any substantial pool movement can cause cracks and leaks.	Adds structural strength to pool shell. Prevents leaking
BLEMISHES & STAINS	Little resistance to stains and blemishes, even if surface has been recently applied.	Resistance to stains, with easily cleaned surface.
ALGAE RESISTANCE	Algae adheres to porous surface.	Smooth, dense, non-porous surface prevents algae from adhering.
CHEMICAL DEMAND	High chemical requirement at all times. Reactive surface.	Noticeable reduction in chemical usage due to the inert nature of GLASSCOAT. Makes pool chemicals more efficient.
ATTRACTIVENESS	Unightly when stained/deteriorated.	Maintains attractive appearance.
DURABILITY	Depends on application. Replaster often separates from original surface (poor adhesion). Material limitations reduce the durability of plaster.	The superior corrosion resistant and inert properties of GLASSCOAT ensure exceptional durability.
WATER CHEMISTRY	Very sensitive to incorrect water chemistry. Plaster surface easily compromised.	Inert surface less sensitive to out-of-balance water chemistry – a very forgiving surface.
WARRANTY	Because of material limitations, very limited warranty offered (workmanship only).	Applied by specialists. More comprehensive warranty offered.
LIFE EXPECTANCY	Varies and depends on water chemistry, maintenance regime, plaster mix and application technique. Average is 5–7 years.	Far exceeds service life of plaster. Time tested with 30 years industry experience.
START-UP	Complicated. Requires brushing and attention.	Simple. No brushing needed. Allow to cure, then start-up.

WHY GLASSCOAT IS THE BEST CHOICE

GLASSCOAT is the material that has modernized pool refinishing. It is the ideal material to contain water. This material is well known for corrosion resistance, low life-cycle cost, no periodic maintenance, and long service life. **GLASSCOAT** is inert and imparts waterproofing properties for cracked/leaking pools. Years of field experience demonstrate that **GLASSCOAT** can dramatically reduce construction or renovation costs, limit maintenance, and extend the life of a swimming pool or aquatic facility.

Think of **GLASSCOAT** as a pool shell that seals, protects, and waterproofs. This very durable material provides considerably lower maintenance and operational costs. Pool operators remark on the chemical savings and significant improvement in aesthetics.

GLASSCOAT provides superior strength, far beyond that of conventional plaster, coatings or vinyl liners...it outlasts them all! This surface is immune to damaging effects of pool water. **GLASSCOAT** reduces the time and effort of maintaining any pool or aquatic facility.

GLASSCOAT SOLUTIONS FOR DEMANDING AQUATIC ENVIRONMENTS

Unsurpassed Strength, Versatility and Durability

GLASSCOAT VS. PLASTER:

High-performance composite materials outperform all basic white marble and specialty plasters, quartz aggregate/polymer modified cement, as well as pebble aggregate type plasters. These cementitious finishes provide no warranty, due to their inherent shortcomings.

GENERAL CHARACTERISTICS

- Corrosion resistant and waterproofing properties.
- Structural—repairs cracks and leaks.
- High strength, flexibility, and crack bridging properties.
- Low life-cycle cost.
- Much longer service life than competing materials.
- Virtually no periodic maintenance.
- Excellent aesthetic retention over service life.
- Better warranty compared to competing materials.
- Written specifications compared to plaster.
- Outperforms all pebble and quartz materials and PVC liners.
- Overall reduction in facility operating costs.
- 25 year track record in commercial pools.
- Specified by Aquatic Consultants.

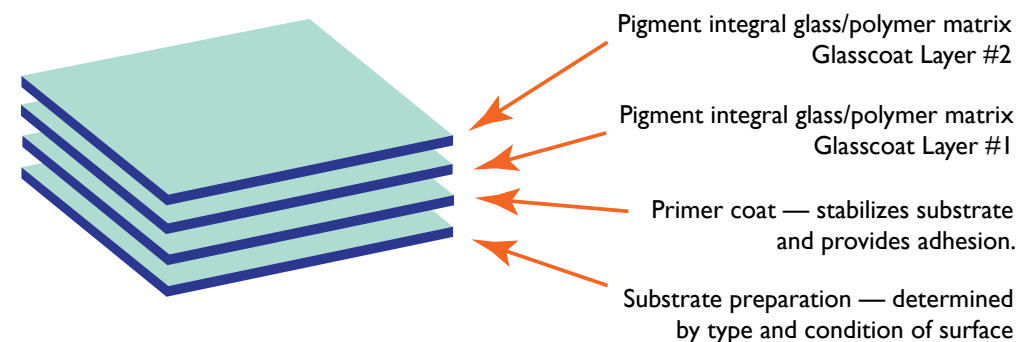
COMMERCIAL SPAS

Hot water is very aggressive on plaster, causing spalling, roughness and staining. **GLASSCOAT** is not subject to degradation in hot water, and keeps the spa in pristine and inviting condition.

25 YEARS EXPERIENCE

WITH STEEL AND CONCRETE CORROSION PROTECTION

THE GLASSCOAT MULTILAYER COATING SYSTEM



SUITABLE FOR:

**pools & spas • fiberglass pools • reflecting ponds & fountains
slides • water parks • aquatic facilities • industrial applications**

SPRAY APPLICATION WITH PRECISION... STATE-OF-THE-ART EQUIPMENT

GLASSCOAT is unlike conventional fiberglass. *Glasscoat is a spray applied application.* The fiberglass reinforcement/resin is concurrently sprayed using sophisticated high-output plural component equipment. The sprayed method offers many technical advantages over the hand-applied method. **GLASSCOAT** is widely specified by aquatic consultants due to its long service life and maintenance free performance.

Certified Pool Resurfacing has technical expertise, specialized knowledge and years of experience in corrosion protection. We offer various glasscoat materials based on project requirements, from light coatings to heavy-duty linings for industrial corrosion protection.

Our certified applicators will work with you from start-to-finish, ensuring a timely completion of the renovation of your pool.

The philosophy and success of **Certified Pool Resurfacing** is driven by a commitment to technical innovation, and delivering the best technical knowledge and customer satisfaction.

Our applicators have the experience with both commercial and residential pools, as well as distressed pools or other complex aquatic renovation projects.